

- 1- INTRODUCTION**
- 2- PART 1 SCHEME OVERVIEW and DEFINITION**
- 3- PART 2 REQUIREMENTS FOR ORGANIZATION TO BE AUDITED**
- 4- PART 3 REQUIREMENTS FOR THE CERTIFICATION PROCESS**

INTRODUCTION

1. About ATC International

ATC International is based in the United Kingdom and provides international certification across the world.

ATC International offers a range of services, including:

- Management system certification
- Product certification
- Inspection services

Also, ATC International operating certification of persons.

ATC has been changed thinking of the industries to build a better world about sustainability, social requirements and future of the world and had key roles in this way to improve sustainability, products quality and Social Welfare. From the beginning until now, we have grown to become a global trustworthy partner for testing, inspection and certification (TIC), providing a comprehensive range of quality services to clients in over 20 countries.

Our in-depth knowledge and experience cover all aspects of the supply chain, across a wide range of industries, including food, feed, energy, forestry, sustainability, social compliance, textiles, industrial appliances and construction products.

2. How to Use This Document

This document sets forth the overall requirements for conformity with the Metal Products Scheme. Guidance and supporting documents are available at <https://atcintlgroup.com/>. In the Metal Products Scheme, the following terms are used to indicate requirements, recommendations, permissions, or capabilities:

- “shall” indicates a requirement
- “should” indicates a recommendation
- “may” indicates a permission
- “can” indicates a possibility or capability

PART 1

SCHEME OVERVIEW

PART 1 SCHEME OVERVIEW

1. About Metal Products Standards for Product Certification Activities

The Metal Products' standards are international, voluntary standards that provides the conformity assessment of production control system for Metal Products quality requirements. Standards are defined as below:

- EN 10080: Steel for the reinforcement of concrete - Weldable reinforcing steel – General
- BS 4449: Steel for the reinforcement of concrete. Weldable reinforcing steel. Bar, coil and decoiled product.

For more information or to apply for certification, please visit: <https://atcintlgroup.com/>

The goal of the Metal Products scheme is to assessment and verification of the production control system in accordance with above standards. This scheme aims to deliver this goal through following key objectives:

- Provide the industry with a tool to verify the metal products they purchase,
- Provide companies with a trusted tool to communicate metal products to the industry,
- Ensure that products and the production control system comply with at least the requirements of the standards,
- Ensure that the scheme continues to meet market needs,
- Adopt a continuous improvement development approach, to ensure the scheme remains relevant.

The Metal Product Scheme (hereafter the Scheme) outlines the requirements for the audit and certification of Metal products conformity assessment.

ATC International is the scheme owner of the Metal Products Scheme. Only ATC International has rights to establish and change this scheme when it is necessary.

ATC International will establishing and changing the scheme, when necessary to ensure that scheme continues to meet market needs and accreditation manager is responsible to Informing the ABs any relevant information and developments relating to the scheme.

2. Ownership

The ATC International UK retains the ownership and the copyright of Metal product scheme.

3. Language

English is the original and valid version of the Scheme.

4. Aim And Objectives

The aim of the Scheme is to ensure that it continuously meets international Metal industry requirements resulting in a certification that assures that Metal and steel organizations provide high quality metal to its customers.

5. Terms and Definitions

Conformity assessment scheme means conformity assessment program, set of rules and procedures that describes the objects of conformity assessment, identifies the specified requirements and provides the methodology for performing conformity assessment (Reference ISO IEC 17067),

Scheme owner means person or organization responsible for the development and maintenance of a conformity assessment system or conformity assessment scheme,

Standard means the characteristics of the product, its processing and production methods, their relevant terminology, symbols, packaging, marking, labeling and conformity for common and repeated use, aimed at establishing an optimum level of order under existing conditions, approved by a recognized body Regulations that specify one or more of the evaluation procedures and whose compliance is optional,

Sampling means selection and/or collection of material or data regarding an object of conformity assessment,

Testing means determination of one or more characteristics of an object of conformity assessment, according to a procedure,

Inspection means examination of an object of conformity assessment and determination of its conformity with detailed requirements or, on the basis of professional judgement, with general requirements,

Audit means process for obtaining relevant information about an object of conformity assessment and evaluating it objectively to determine the extent to which specified requirements are fulfilled,

Validation means confirmation of plausibility for a specific intended use or application through the provision of objective evidence that specified requirements have been fulfilled,

Verification means confirmation of truthfulness through the provision of objective evidence that specified requirements have been fulfilled,

Review means consideration of the suitability, adequacy and effectiveness of selection and determination activities, and the results of these activities, with regard to fulfilment of specified requirements by an object of conformity assessment,

Decision means conclusion, based on the results of review, that fulfilment of specified requirements has or has not been demonstrated,

Attestation means issue of a statement, based on a decision, that fulfilment of specified requirements has been demonstrated,

Scope of attestation means range or characteristics of objects of conformity assessment covered by attestation,

Declaration means first-party attestation,

Certification means third-party attestation related to an object of conformity assessment, with the exception of

accreditation,

Accreditation means third-party attestation related to a conformity assessment body, conveying formal demonstration of its competence, impartiality and consistent operation in performing specific conformity assessment activities,

Surveillance means systematic iteration of conformity assessment activities as a basis for maintaining the validity of the statement of conformity,

Suspension means temporary restriction of the statement of conformity by the body that issued the statement, for all or part of the specified scope of attestation,

Withdrawal means cancellation, revocation of the statement of conformity by the body that issued the statement,

Expiry means ending of the validity of the statement of conformity after a specified period,

Manufacturer means any natural or legal person who manufactures related product or who has such a product designed or manufactured, and markets that product under his name or trademark,

Production control means the documented, permanent and internal control of production in a factory, in accordance with the relevant technical specifications.

PART 2

REQUIREMENTS FOR ORGANIZATION TO BE AUDITED

PART 2 REQUIREMENTS FOR ORGANIZATION TO BE AUDITED

1. Purpose

This part describes the Scheme requirements against which ATC INTERNATIONAL shall audit the clients in order to achieve or maintain certification for Harmonized standard in this scheme.

2. Requirements

Organizations shall develop, implement, and maintain all the requirements outlined in harmonized standards in this scheme and will be assessed by ATC International in order to receive a valid certificate.

The assessment requirements are defined in PART 3 of this document.

The client shall prepare and make all documents and records in accordance with conformity with this scheme and relevant standard(s).

In addition, the organization shall ensure that in case external laboratory test/ analysis services are used for the verification and/or validation of the product, these shall be conducted by a competent laboratory that has the capability to produce precise and repeatable test results using validated test methods and best practices (e.g. successful participation in proficiency testing programs, regulatory approved programs or accreditation to international standards such as ISO 17025). This is also applicable for the own laboratory of the organization.

In addition, the organization shall ensure that finished products are labelled according to all applicable statutory and regulatory requirements in the relevant standard.

a. Sampling and testing

The organization shall meet requirements of related standard of the scheme to do Sampling and testing including routine inspection and testing, Sampling and testing of finished products, verification of standard properties, evaluation of test results, long-term quality level, material inspection and testing, traceability and report each as applicable.

PART 3 REQUIREMENTS FOR THE CERTIFICATION PROCESS

1. Principles of Metal Products Scheme

a. Product Certification Scheme of Metal Products Scheme

In accordance with the relevant standard which are defined on the scope of this scheme, the product certification scheme has been created by ATC International as follows based on EN ISO/IEC 17067 Table-1:

Table.1 Product Certification Scheme of Metal Products Scheme

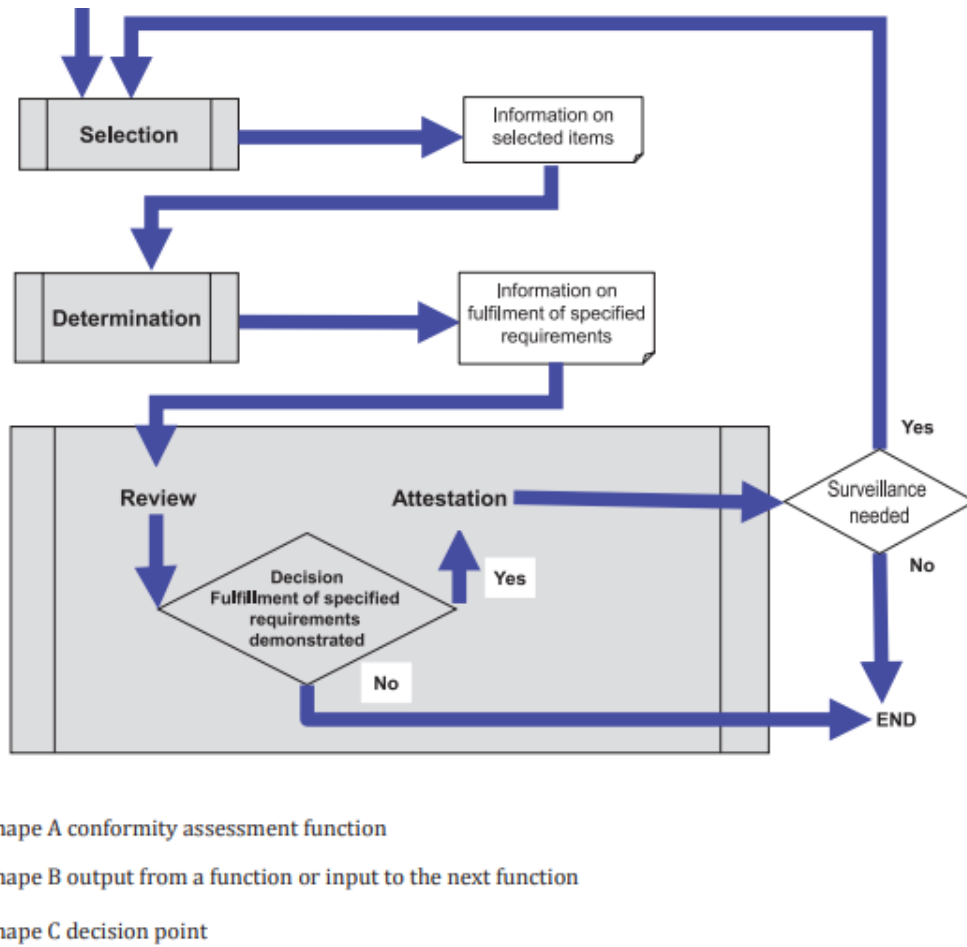
Conformity Assessment Roles and Activities in Product Certification Schemes		Product Certification Scheme Type (Type 6)
I	Selection (including planning and preparation activities, specification of requirements, e.g. normative documents, and sampling)	X
II	Determination of characteristics , as applicable, by: a) testing b) inspection c) design appraisal d) assessment of services or processes e) other determination activities, e.g. verification	X
III	Review (Examining the evidence of conformity obtained during the determination stage to establish whether the specified requirements have been met)	X
IV	Decision on certification (Granting, maintaining, extending, reducing, suspending, withdrawing certification)	X
V	Attestation, licensing	
	a) Issuing a certificate of conformity or other declaration of conformity (confirmation)	X
	b) Granting the right to use documents or other declarations of conformity	X
	c) Issuing a certificate of conformity for a batch of products	-
VI	d) The granting of the right to use the conformity marks (licencing) is based on a surveillance (VI).	X
	Surveillance	
	a) Performing tests or examination of samples from the market	-
	b) Performing test or inspection of samples from the factory	X
VI	c) Evaluation of production, service delivery or operation of the process	X
	d) Management system inspections combined with random	X

	inspections	
--	-------------	--

This scheme was validated by ATC International because of Type 6 of ISO/IEC 17067 is based on for implementation.

b. Functional Approach to Conformity Assessment

Figure.1: Functional approach to conformity assessment



Shape A in Figure.1 represents a conformity assessment function for Metal Products scheme. The specific activities in each function can vary from one type of conformity assessment to another, based on the needs of users, the nature of the specified requirements and the object of conformity assessment involved.

Shape B in Figure.1 represents output from a function and is also the input to the next function. The nature of the output varies, depending on the specific activities that have been undertaken.

Shape C in Figure.1 represents a decision.

c. Selection

In some cases, clients might have obtained the results of determination activities, such as testing, inspection or auditing, prior to making an application for certification. In such a situation, the conformity assessment result may be from a source not within the contractual control of the certification body. At that time;

- For inspection activities, scheme owner requests the inspection records which were issued by the accredited inspection bodies in accordance with the requirements of ISO/IEC 17020.
- For testing activities, scheme owner requests the test records which were issued by the accredited test

laboratories in accordance with the requirements of ISO/IEC 17025 or government laboratories.

- For personnel certification, scheme owner requests the personnel certification records which were issued by the accredited personnel certification bodies in accordance with the requirements of ISO/IEC 17024.

Sampling process is implemented in the Metal Products Scheme which is described on Working Instruction 12 Sampling Instruction. The initial audit of the product and production control system also includes the laboratory for testing and inspection of products-methods for testing. They shall response to the prescribed requirements by the relevant standard. The competency of the laboratory shall be demonstrated with:

- Direct audit of the personnel, the measures and methods for testing within the scope of the production control in the laboratory, by the auditing team,
- Evaluation of the external laboratory, by the auditing team,
- Checking the validity of the certificate for accreditation according to ISO/IEC 17025 when the laboratory (own or external) is accredited.

d. Competence

The competences required to conduct the activities of application review, audit team selection, audit planning activities and certification decision defined as below:

Criteria for Lead Auditor:

- a) To participate and succeed to ISO 19011 Internal Auditor Course or ISO 9001 Lead Auditor Certificate,
- b) To have completed at least an undergraduate program,
- c) To have at least three (3) days of audit experience related to the production control system or the quality management system,
- d) To have received EN ISO/IEC 17065 standard training.

Criteria for Technical Expert:

- a) Having at least two (2) years of work experience (such as production, quality assurance, quality control, departments) including in the sector group to which they will be assigned or to have at least five (5) days of audit experience related to the production control system of the related sector,
- b) Graduated from bachelor's degree of engineering suitable for the product group to which they will be assigned,
- c) To have received EN ISO/IEC 17065 standard training.

Criteria for certification expert reviewing the application:

- a) To have completed at least a four (4) year undergraduate program,
- b) To have received EN ISO/IEC 17065 standard training.

Criteria for the Decision Maker who took the certification decision:

- a) To participate and succeed to ISO 19011 Internal Auditor Course or ISO 9001 Lead Auditor Certificate,
- b) To have completed at least a four (4) year undergraduate program,
- c) To have at least 20 days of audit experience related to the production control system or the quality management system,
- d) Having at least five (5) years of work experience within the scope of product certification activities in accordance with the related standards that are mentioned in the scope,
- e) To have received EN ISO/IEC 17065 standard training.

e. Application and Audit process

1. Application for conformity assessment of products and Contract

To open a procedure for conformity assessment of the product and production control, the Manufacturer or Authorized by its Person, named as “Applicant”, submit to ATC International, provided by ATC International. The application form shall content the information needed as below:

The application form shall content at least the following information:

- the product(s) to be certified,
- the standards and/or other normative documents for which the client is seeking certification,
- the general features of the client, including its name and the address(es) of its physical location(s), significant aspects of its process and operations (if required by the relevant certification scheme), and any relevant legal obligations,
- general information concerning the client, relevant to the field of certification for which the application is made, such as the client's activities, its human and technical resources, including laboratories and/or inspection facilities, and its functions and relationship in a larger corporation, if any,
- information concerning all outsourced processes used by the client that will affect conformity to requirements; if the client has identified a legal entity/entities for producing the certified product(s) that is different from the client, then the certification body can establish appropriate contractual controls over the legal entity/entities concerned, if necessary for effective surveillance; if such contractual controls are needed, they can be established prior to providing formal certification documentation,
- all other information needed in accordance with the relevant certification requirements, such as information for initial evaluation and surveillance activities, e.g. the locations where the certified product(s) are produced and contact personnel at these locations.

The following documents shall be enclosed to the application form:

- Document for registration of the Company,
- Document for the current state of the Company,
- Technical documentation of the product (test reports, technical data sheets, procedure qualification records etc.),
- Production control system documentation,

2. Audit Duration

ATC International Scheme manager or APP reviewer shall calculate the audit time based on the information gathered from the organization's application as follows:

- a) the duration of an audit day normally is eight (8) hours
- b) the audit time calculation for scheme shall be documented by the APP Reviewer, including justifications for reduction or addition of time based on the minimum audit duration.
- c) the on-site audit time does not include planning, reporting or travel activities, only actual on-site auditing time.
- e) the on-site audit time shall only apply to auditors that are fully qualified based on qualification criteria.

While calculating the certification and surveillance days in the production control audits, the audit day will be determined by Scheme Manager or App reviewer as at least 1 day per customer's manufacturing site. This period

will be evaluated by considering the production control system applied in the other manufacturing site and the proximity of the manufacturing site to the other manufacturing site. Other factors that determine the duration of the audit may be:

- The number of main production equipment (for example, extruder, rolling stand, press, different types of welding machines) is more,
- Subcontractors will be audited in line with the use of subcontractors in important processes in companies applying for certification,

The number of people in the audit team can be increased according to the relevant conformity assessment standards. The number of people in the audit team does not affect this period.

A certification contract shall be in place between ATC International and the organization applying for certification, detailing the scope of the certificate and referring to all relevant Scheme requirements.

3. Planning And Managing Audits

Initial Assessment include following steps:

- 1) Plan and program
- 2) Onsite Audit
- 3) Audit finding and reporting
- 4) Corrective Action and Correction by the organization
- 5) Closing and verifying Action
- 6) Decision Making

The purpose of the initial audit is to be evaluated on site the level of implementation and the efficiency of the management system of the production control.

The audit of the product and production control system includes at least the following documents:

- Input control of materials,
- Management of the production processes and intermediate control,
- Control of the ready product,
- Results from the control,
- Metrological assurance of the technical measurements,
- Internal transport, storage, identification and marking of the materials and end products,
- Frequency of taking and testing of samples from the manufacturing,
- The laboratory and inspection, where the testing and inspection of the product has been performed,
- Management of nonconformity product,
- Reclamations and research the client satisfaction,
- Corrective and preventive actions,
- Management of documents,
- Training and qualification of the personnel,
- Internal audits and management review.

Definition of the product's type (type testing, type calculation, procedure qualification records, table values or describing documentation) is obligation of the customer and shall be conducted in compliance with the methods, required by the standard. The Audit Team shall be acknowledged with the evidence of the results of definition of the product type, to be compared with the requirements of the technical specification.

The audit covers the conduction of product's type definition, as well as the results, related with all characteristics, covered by production control system, related standard.

The initial audit of the product and production control system also includes the laboratory for testing and inspection of products-methods for testing. They shall response to the prescribed requirements by the relevant standard. The competency of the laboratory shall be demonstrated with:

- Direct audit of the personnel, the measures and methods for testing within the scope of the production control in the laboratory, by the auditing team,
- Evaluation of the external laboratory, by the auditing team,
- Checking the validity of the certificate for accreditation when the laboratory (own or external) is accredited.

In case of nonconformities, the manufacturer shall be informed at the end of the audit. Within 30 days, the applicant shall notify the lead auditor and ATC International for the corrective actions plan and the deadline for their implementation. If the lead auditor accepts the corrective actions plan, the applicant shall share the corrective action records within 90 days.

The records from the initial audit of the product and production control system shall be resumed in a Report, which covers all questions during the audit, contents all findings, notes and nonconformities, if any. The Checklist and Report Form for audit shall be prepared in 2 copies, one of which shall be send to the decision maker, the other copy shall be send to the customer not later than 5 days after conduction of the audit.

Based on the results from the product type definition, the Checklist and Report Form for audit and technical documentation, the Decision maker prepares report-decision with proposal for issuance of the certificate in the customer or with argued denial for issuance.

If the results of the conducted product and production control audit are positive and when the results from the definition of the product type meet the requirements of the standard, shall be issued Certificate of conformity and the customer will be informed about it.

For each manufacturing site, clearly defined, shall be issued one certificate. The certificate shall be issued in English language, and if it is discussed with the manufacturer, it may be issued with the other requested language. The Certificate of conformity has unique identification number.

Published certificates are added to Certified Companies Change Suspension and Cancellation List. The issued certificate is delivered to the customer after the customer fulfills its financial obligations. The use of the certificate is made in accordance with Mark, Logo and Certificate Use. The issued certificates are published on the website <https://atcintlgroup.com/>.

The extension of the certificate's scope shall be conducted in the order of the current procedure, as the auditor, conducted the initial audit shall define the necessity of follow up audit and its scope.

When refusal of issuance of certificate, the customer shall be notified in written matter within 10 days after the decision is taken. The Applicant has the right to prepare written appeal within 14 days of the receiving the notification for certificate's denial.

A manufacturer, who wants to extension its certificate for conformity for other products produced in accordance with the other technical specification, but in the same manufacturing site covered of the same factory production control system, shall apply to ATC International with new application form. In this case ATC International must decide if it is necessary to be conducted full or part audit of the manufacturing and the production control.

4. Multiple Functions Across More Than One Site

Every site belonging to the group shall have a:

- a. separate audit,
- b. separate report and
- c. separate certificate.

The site audit reports and certificates shall show which functions and/or processes have been audited.

All individual sites shall be audited within a time frame as continues audit. it cannot audit each site with

interruption.

5. Surveillance

- 1) Annual audits shall take place to ensure certificate validity or that recertification is granted before the expiry date of the certificate.
- 2) The annual audit shall be carried out on-site at the premises of the organization and is a full audit against all Scheme requirements.
- 3) The audit shall be carried out in a mutually agreed language. An interpreter may be added to the team to support members of the audit team.
- 4) The 5-year certification cycle (shall be respected at all times.)

The purpose of the surveillance is for the product certification body to assure, that the customer shall confirm all requirements defined in the established documentation in production control system, the applicable technical specification and to identify eventual changes in the manufacturing processes of production control system. Continuous surveillance audits of weldable reinforcing steel products in the Scheme shall be performed at a frequency considered necessary by the certification body but not less than twice a year.

The surveillance includes:

- Inspection of the documentation of the product and production control system and records, with which is documented the conformity of the requirements of the technical specification,
- Records of the conducted input control of the materials,
- Records of the conducted internal audits and taken corrective actions,
- Records of management of the technical measures,
- Submitted appeals, complaints, and the taken actions,
- Revision of the made changes (in the technical documentation, in the production control system documentation, in the output materials and in the technology of the manufacturing, stopping the manufacturing etc.),
- Comparing the data, received during the initial audit or from the previously surveillances,
- Taking and testing of samples for current control, according to the established plan of the manufacturer,
- All changes in production control system and/or manufacturing (its obligation of the manufacturer to inform beforehand the auditor. If this obligation is not fulfilled, this shall be defined as nonconformity),
- The frequency, keeping the current testing and the results,
- Methods and testing measurements.

For established nonconformities in surveillance, the customer shall be informed in the end of the surveillance.

The auditor shall prepare a Checklist and Report Form for audit for the results of the surveillance in two copies, one of which shall be send to the Decision maker, the other copy shall be send to the customer within 5 days at latest from the conduction of the audit. Within 30 days, the applicant shall notify the lead auditor and ATC International for the corrective actions plan and the deadline for their implementation. If the lead auditor accepts the corrective actions plan, the applicant shall share the corrective action records withing 90 days. If the expiry date of the certificate is earlier than 90 days, at that time the applicant shall share the corrective action records until expiry date of the certificate. When the customer does not meet the agreed deadlines for the taking of the corrective actions or the auditor considers them as not effective, the auditor makes proposal for cancellation or temporary withdrawal the activity of the issued certificate.

The Decision maker could require the conduction of follow up audit.

The customer shall inform ATC International for every change in the production control system which could lead to change in the products' characteristics. In this case ATC International takes decision if the made changes require

taking of activities as additional testing of the product or/and unplanned audit of the production control system.

6. Follow-up Audits

It is carried out in order to determine that major nonconformities that emerged during certification, surveillance and change audits and minor nonconformities that require on-site audit have been resolved and corrective actions have been effectively implemented. If a follow-up audit is performed after the product and production control system audit, the audit can be performed as a full audit. Follow-up audits are carried out by the audit team that performed the main audit, unless there is a situation that requires otherwise (illness, death, conditions that may affect impartiality, etc.). The follow-up audit activity is carried out on a jointly planned date with the customer, after the corrections determined in the Nonconformity Report are made. After the product and production control system audit, the customer's application is canceled if the customer cannot complete its preparations within the time given to the customer for the follow-up audit and/or cannot prove that it has corrected the nonconformities during the follow-up audit. In the audits performed less than 30 days before the certificate validity period expires, the nonconformity closing period is given at least 7 days before the certificate validity period. This time is required for the decision maker to complete his/her review. If there is any non-compliance that cannot be closed within this period, the customer's application is cancelled. After the nonconformities are verified by the auditor, the audit file is sent to the decision maker and the review process is carried out.

7. Changing Audits

It is carried out for the purpose of controlling changes such as the change of the company title, the change of the company's product scope, the change of the company's official address and branches. Change requests are received from the customers in writing with the Certificate Changing Request Form, the Scheme Manager decides whether to conduct a document review or field inspection and is recorded on the same form. If it is deemed necessary to inspect the manufacturing site, it is decided to conduct a manufacturing site audit. In addition to document review in scope change and address change audits, manufacturing site audits are carried out in the required time depending on the scope and production location and recorded with the relevant Checklist and Audit Report Form. If the documents and records are deemed appropriate by the decision maker, changes are made and recorded in the Certificate Changing Request Form. In line with the decision taken, the certificate is updated and forwarded to the customer. If the certification change is not deemed appropriate, the customer is notified in writing. In certificate changes, the customer's current certificate validity period does not change.

8. Short Notice Audits

It is carried out in cases of complaints containing objective evidence against the company. Scheme Manager may decide to conduct an unusual audit by contacting the customer, even though it is not in the program. In such audits, the customer is informed and the audit is carried out in a time that will not allow the company to change the current situation (maximum 1 day before). In audits;

- Subject of the complaint,
- The results of previous surveillance visits,
- Measures taken based on the complaint, corrective actions,
- Where appropriate, special conditions for system validation,
- Examine significant changes, if any, in the organization of the manufacturing process, measuring or techniques.

While assigning the audit team to perform the audit, Scheme Manager assigns an audit team that is different from the previous audit team and capable of interpreting the subject of the complaint.

If the customer does not accept the audit, the certificate is suspended with the approval of Scheme Manager and the customer is notified in writing. ATC International has stated in the previously signed contract that it can take this decision.

9. Unannounced audit

ATC INTL shall ensure that for each certified organization at least one surveillance audit is undertaken unannounced after the initial certification audit and within each five (5) year period thereafter if the client raised any Major nonconformity in stages.

The certified organization can voluntarily choose to replace all surveillance audits by unannounced annual surveillance audits. Recertification audits may be conducted unannounced at the request of the certified organization.

The initial certification audit cannot be performed unannounced.

10. Decision according to the validity of the issued certificate

Based on the report from the conducted surveillance audit, the decision maker shall prepare decision-statement for maintenance, suspension (temporary suspension) or withdrawal of the certificate of conformity which shall be provided to Scheme Manager for approval.

If the decision of ATC International is positive, the manufacturer shall be notified written for confirmation of the validity of the issued certificate.

If the decision is negative, the customer shall be informed in written matter for temporary cancelation or withdrawal of the certificate for conformity till the nonconformities are removed. Till the nonconformities removal, the customer cannot refer to certification. In the above-mentioned cases the customer is obliged to give back the original copies of the issued certificates within 5 days after the date of withdrawal.

If the customer has appealed according the made evaluations and actions of the current procedure, could submit written appeal to the Committee of appeals, after that shall be proceed in accordance with Complaint and Appeal Procedure of ATC International.

Issued certificate of conformity shall be withdrawn in one of the following cases:

-Not fulfillment of the agreed deadline for corrective actions for the established during surveillance nonconformities which lead to nonconformance of the product with the technical specification.

-Lack of manufacturing activity more than a year,

-If the company obstructs conduction of planned surveillance,

If it is proved improper use of the certificate,

-None following the conditions of the certification contract.

11. Re-assessment and renewal of certification

The duration of certification, based on satisfactory maintenance of approval shall be for a period of 5 years from the date of issue of the applicable certificate. After this period the manufacturer's system of production control shall be subject to a re-assessment which shall include all elements of the system at this stage. Re-assessment process is implemented with the same process of initial certification.

12. Certificate Suspension, Withdrawal or Reduction

1) Suspension: ATC International immediately suspend certification when a critical nonconformity is issued and/or there is evidence that their client is either unable or unwilling to establish and maintain conformity with Scheme requirements.

2) Withdrawal: ATC International shall withdraw a certificate when:

a) the status of suspension cannot be lifted within six (6) months,

b) any other situation where the integrity of the certificate or audit process is severely compromised.

3) When the ATC International has evidence that their client holds a certificate whose scope exceeds their capability or capacity to meet scheme requirements, Scheme Manager shall reduce the certification scope accordingly.

13. Action Upon Suspension, Withdrawal and Scope Reduction

1) In case of suspension or withdrawal, the organizations' management system certification is invalid. ATC International shall:

- a) immediately change the status of the certified organization in the Portal and its own Register of certified organizations and shall take any other measures it deems appropriate,
- b) inform the organization in writing of the suspension or withdrawal decision within three (3) days after the decision was made,
- c) instruct the organization to take appropriate steps in order to inform its interested parties.

2) In case of scope reduction, the organizations' management system certification is invalid beyond the revised certification scope statement. ATC International shall:

- a) immediately change the scope of the certified organization in the website database,
- b) inform the organization in writing of the scope change within three (3) days after the decision of change,
- c) instruct the organization to take appropriate steps in order to inform its interested parties.

14. Certificate, Mark and Logo Usage

All rules related to the Metal Products Scheme are subject to the requirements of Work Instruction 06 Mark, Logo and Certificate Use. For more information, please visit: <https://atcintlgroup.com/>.

15. Complaints and Appeals

- a) All complaints shall follow by Compliant and appeals form that published in: <https://atcintlgroup.com/>
- b) Complaints shall be investigated, corrective action taken to resolve the issue.
- c) Records shall be maintained.

16. Documents and Records

This scheme reviews every years by a committee include CEO, COO, Accreditation manager and Scheme manager The scheme owner informs the ABs and CABs of any relevant information and developments relating to this scheme from the website <https://atcintlgroup.com/>.

Records of the Metal Products Scheme are kept on at least 10 years by the Scheme owner.

REFERENCES

Work Instruction 06 Mark, Logo and Certificate Use

EN ISO/IEC 17000 Conformity assessment- Vocabulary and general principles

EN ISO/IEC 17065 Conformity assessment- Requirements for bodies certifying products, processes and services

EN ISO/IEC 17067 Conformity assessment- Fundamentals of product certification and guidelines for product certification schemes

EN 10080: Steel for the reinforcement of concrete - Weldable reinforcing steel – General

BS 4449: Steel for the reinforcement of concrete. Weldable reinforcing steel. Bar, coil and decoiled product.

Document Revisions

Rev. No	Date	Description	Prepared	Controlled	Approved
00	16.11.2023	First Publication	Ümit Bucak	Ümit Bucak	Rasool Safarzadeh